

Depending on the information lecturers entered into Stud.IP you will see details about a course: when and where it will take place, if there will be preliminary discussions, who is the lecturer or the tutor, the type of the course, annotations and descriptions. It may be indicated how to achieve a certificate and how many ECTS credits can be earned. You can access, download or print available files, for example scripts, exercises, and recordings of lectures.

## Just communicate!

Interaction with other students, tutors and lecturers is an important feature of Stud.IP. Especially exchange of information and communication are fundamental. In Stud.IP you can see a list of participants registered in a course. By clicking on the envelope icon beside the names you can send messages to other participants. You can also reach all participants of a certain team or work group with one click.

Category	Participant	Postings	Documents	Message
Lecturers	1	0	16	[icon]
	2	11	34	[icon]
	3	0	0	[icon]
Tutors	1	0	2	[icon]
	2	0	0	[icon]
	3	0	0	[icon]
	4	0	0	[icon]
Authors	1	0	0	[icon]
	2	0	0	[icon]
	3	0	0	[icon]
	4	0	0	[icon]

## Search for literature

The search option on the homepage leads directly to a convenient search for literature, where you can browse the catalogue of, e.g. the TU-library as well as others. The titles you found will be shown with bibliographical data such as year of publication and author. You can check their availability and put them on your personal watchlist. No additional log-in is necessary for the catalogue of the TUHH Library.

**Search in Stud.IP**

**Search for courses**  
Here you will find all courses registered in Stud.IP.

**Search for users**  
Here you search for your fellow students and lecturers who are registered in Stud.IP.

**Search for institutes**  
Here you will find all institutes available in Stud.IP.

**Search for learning modules**  
Here you can find learning modules from connected systems.

**Search in archive**  
Here you will find all archived courses from previous semesters.

**Search for literature**  
You can search the various catalogues for literature.

## What else?

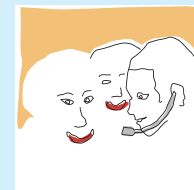
In Stud.IP course related wikis can be created and edited by the course's participants. A clearly arranged timetable shows forthcoming dates and further information. Moreover, learning modules can be linked with courses and therefore deepen the subject matter. Features like discussion forum, chat, or messaging service allow the exchange with lecturers or students.

## Contact persons at the eLearning Competence Centre

Stud.IP provides you a wide range of functions. If you have any questions or suggestions concerning eLearning in general or Stud.IP in particular please feel free to contact us. Your questions and feedback are welcome!

elearning@tu-harburg.de or

Corinna Peters - E 17  
peters@tu-harburg.de  
Detlev Bieler - TUB  
bieler@tu-harburg.de  
Olav Wilde - RZTU  
wilde@tu-harburg.de



Graphics: Bieler

Text: Peters, Layout: Bieler - February 2010



# eLearning at the TUHH

## Information for Students

Soft Skills  
eLearning  
ePortfolio  
Web 2.0

# Introduction

eLearning – learning incorporating electronic media – is becoming increasingly important at the TUHH. Supporting conventional classroom lecturing, it will continue to enhance the quality of academic education and thereby contribute to your academic success. Apart from various eLearning projects in the last years, Stud.IP is particularly worth mentioning, a central learning platform that is intensively used by many lecturers and students. The acronym Stud.IP means **Studi**enbegleitender **I**nternetsupport von **P**räsenzlehre, or in English: internet based support for classroom lecturing. Some of the features of Stud.IP and some of its basic functions are explained in this flyer.

# What is Stud.IP?

Stud.IP is a learning platform that can be accessed regardless of time or location. Lecturers upload information about courses, like date and room, resources such as bibliographies, scripts, recordings of lectures, or links to simulations and animations. They can communicate with students via Stud.IP, for example to announce short-term changes of time or location. You can discuss with other course participants in the forum, edit a wiki, or chat with others. Furthermore, every user can set up their personal profile. Communication and exchange among students and lecturers is easy to use and uncomplicated.

In case you cannot find your course in Stud.IP please contact your lecturer whether the information is already entered.

# Registration for Stud.IP

Access to Stud.IP is provided on <http://e-learning.tu-harburg.de>. You can log in with your account provided by the university's computer centre.



# Interface of Stud.IP

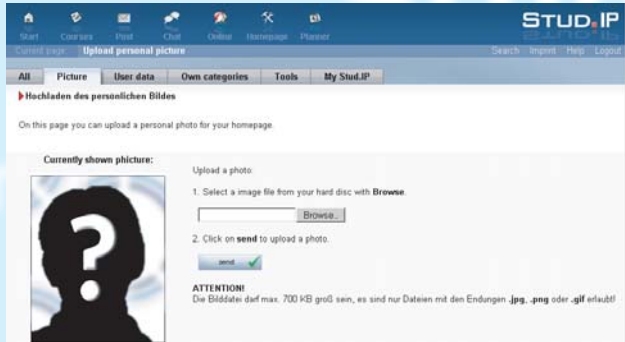
After you have logged in you will see the start page:



- 1 Using the icons in the navigation bar you can reach your courses, new messages, the chatroom, your personal profile etc. There is also an extensive help function.
- 2 In the central part of the page you will find links to frequently required functions, such as subscribed courses or your time table.
- 3 The lower part of the page displays appointments, news, or surveys. The dates and times refer to your subscribed courses. Additional dates can be set up by you.

# Personal data and your courses

The homepage icon leads you to your personal Stud.IP user profile.



You can add information about yourself and upload a picture. Put your contact information, your CV and study details into the section „user data“.

# Search and register for courses



You can find courses in Stud.IP either by choosing „course search“ and then the tab „Courses search/add“ (in the middle of the homepage), or by using the search option in the top navigation bar and then selecting „search for courses“. The „extended search“ allows you to enter the name of the course or the lecturer.

Otherwise you can search for courses of a certain institute. For example, if you select the institution „Technische Universität Hamburg-Harburg“, all TUHH-courses will be listed. The results can be narrowed down by selecting one level beneath.

Then click on the course that you want to subscribe and choose „Enter yourself for the course here“ in the menu on the right side.

If the course has a limited number of participants you can add yourself to a waiting list.



Personal status: You have not been entered as a participant of this course. Authorisations: Reading, Writing. Actions: Enter yourself for the course here, Back to the last selection, To pencil in the time table, only.